

## Model **8042** TELEHANDLER



### Performance

#### Rated Capacity

8,000 lb (3,629 kg)

#### Maximum Lift Height

41 ft 11 in. (12.7 m)

#### Frame Leveling

10 degrees

#### Lift Speed (boom retracted)

Up: 15 sec

Down: 12.5 sec

#### Boom Speed

Extend: 14.5 sec

Retract: 14 sec

#### Travel Speed Forward

4-Speed Forward: 20 mph (32 kmph)

#### Drawbar Pull

24,000 lb (10,886 kg)

#### Operating Weight Without Carriage and Forks

25,365 lb (11,506 kg)

### Standard Specifications

#### Engine

Make and Model Cummins QSB4.5T Turbo

Fuel Diesel

Cycles 4

No. of Cylinders 4

Displacement 274 cu in. (4.5 L)

Torque Rating 305 lb ft (414 Nm) @

1,500 rpm

Rated Speed 2,500 rpm

Max. Gross BHP 110 hp (82 kW)

Fuel Tank 35 gal (132 L)

#### Engine Filters

Two-stage dry air cleaner – centrifugal pre-cleaner with continuous dust ejector and replaceable dry filter element.

Replaceable spin-on fuel filter.

Full-flow replaceable spin-on engine oil filter.

#### Electrical System

Voltage: 12V

Alternator: 65 amp

Battery: Two batteries, each with 850 cold cranking amps at 0°F

#### Transmission

Modulated powershift.

4-speed forward and 3-speed reverse.

#### Axles

Full-time planetary 4-wheel drive.

Oscillating rear axle with Stabil-Trak system.

#### Service Brakes

Hydraulically actuated inboard wet disc brakes.

#### Parking Brakes

Emergency brake with transmission declutch feature.

#### Tires

Standard: Air-filled 13.00 x 24 – 12 ply

Optional: 13.00 x 24 foam filled

13.00 x 24 rock air

13.00 x 24 rock foam

15.50 x 25 bias air

#### Cab

Certified ROPS/FOPS structure.

Deluxe suspension seat with retractable seat belt.

Rear view mirrors.

Lockable covers.

#### Steering 4-Wheel

Power steering.

Operator selectable 4-wheel circle, 4-wheel crab, 2-wheel front.

#### Instruments

Instrument cluster with gauges and warning lights.

#### Controls

Dual joystick controls.

Proportional frame tilt, fork tilt and auxiliary hydraulics.

#### Hydraulic System-Implement

Piston pump.

60 gal (225 L) system capacity.

Variable flow, load sensitive hydraulic system.

Load holding valves on frame level, stabilizer, attachment tilt, extend and lift cylinders.

#### Auxiliary Hydraulics

Used for all attachments equipped with cylinders or other hydraulic components. Consists of valves, controls, and hydraulic lines.

### Accessories & Options

#### Enclosed All Weather Cab

#### Basic Work Lights

#### Complete Road Lights

#### Rotating Beacon

#### Fenders

#### Cab Heater

### Attachments

#### Standard Carriage

48 in. (1.2 m), 60 in. (1.5 m)

or 72 in. (1.8 m)

#### ± 10° Side Tilt Carriage

48 in. (1.2 m), 60 in. (1.5 m)

or 72 in. (1.8 m)

#### ± 45° Swing Carriage

72 in. (1.8 m)

#### Pallet Forks

2 x 4 x 48 in. (51 mm x 102 mm x 1.2 m)

#### Lumber Forks

1.75 x 7 x 60 in. (45 mm x 178 mm x 1.5 m)

#### Block Forks

2 x 2 x 48 in. (51 mm x 51 mm x 1.2 m)

#### Wallboard/Sheet Material Handler

#### Utility Bucket

1.25 cu yd (0.95 m<sup>3</sup>)

#### Concrete Bucket

0.5 cu yd (0.38 m<sup>3</sup>)

#### Truss Boom

12 ft (3.7 m)

#### Truss Boom With Winch

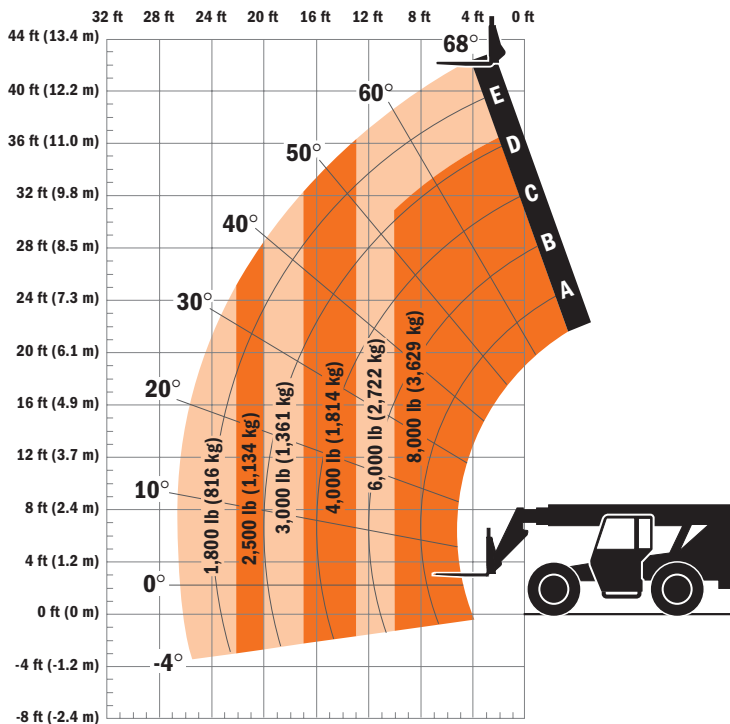
3 ft (91 cm)

#### Hydraulic Earth Auger

#### Crane Hook

#### Sweeper

## Model 8042 TELEHANDLER



### Dimensions

- Length (less forks) . . . 225.2 in. (5.72 m)
- Width . . . . . 98.2 in. (2.49 m)
- Height . . . . . 99.4 in. (2.52 m)
- Wheelbase . . . . . 119.5 in. (3.03 m)
- Ground Clearance . . . 17.3 in. (439 mm)
- Outside Turning Radius . . 156 in. (3.96 m)
- Max. Reach from Front Tires to  
24 in. (609 mm) Load Center . . . 26.6 ft  
(8.10 m)

### IMPORTANT

Rated lift capacities shown are with machine equipped with carriage and pallet forks. The machine must be level on a firm surface with undamaged, properly inflated tires. Machine specifications and stability are based on rated lift capacities at specific boom angles and boom lengths. (If specifications are critical, the proposed application should be discussed with your dealer.)

DO NOT exceed rated lift capacity loads, as unstable and dangerous machine conditions will result.

DO NOT tip the machine forward to determine the allowable load.

Use only JLG approved attachments with proper material handler model/attachment load capacity charts displayed in the operator's cab. OSHA requires all rough terrain forklift operators be trained according to OSHA 29 CFR 1910.178 (1).



**JLG Industries, Inc.**  
 1 JLG Drive  
 McCConnellsburg, PA 17233-9533  
 Telephone 717-485-5161  
 Toll-free in US 877-JLG-LIFT  
 Fax 717-485-6417  
 www.jlg.com

*Due to continuous product improvements, JLG Industries reserves the right to make specification and/or equipment changes without prior notification. This machine meets or exceeds ASME B56.6-2002 as originally manufactured for intended applications.*

Form No.: SS-ST8042-0104-15M  
 Part No.: 3132400  
 Printed in USA  
 R080602