

MODEL 644B-42

SPECIFICATIONS

ENGINE:

- JOHN DEERE — 4039D
80 HP @ 2500 RPM
- JOHN DEERE — 4039DT
110 HP @ 2500 RPM
- CUMMINS — 4B3.9
75 HP @ 2500 RPM
- CUMMINS — 4BT3.9
102 HP @ 2500 RPM

TRANSMISSION:

- 3-SPEED SEMI-AUTOMATIC, FWD. & REV.
- COLUMN-MOUNTED SHIFT LEVER
- NEUTRAL START SWITCH
- H.D. TRANSMISSION OIL COOLER
- DECLUTCH SWITCH ALLOWS BRAKE PEDAL TO DISENGAGE TRANSMISSION WHEN BRAKE IS APPLIED.

AXLES:

- OUTBOARD PLANETARY WITH DOUBLE REDUCTION
- 4-WHEEL DRIVE
- TORQUE PROPORTIONING FRONT DIFFERENTIAL
- STEERING — 3 MODES: 4 WHEEL ROUND, 2 WHEEL, AND CRAB
- HYDRAULIC FULL POWER STEERING WITH 2 DOUBLE-ACTING STEER CYLINDERS PER AXLE

BRAKES:

- 4-WHEEL, FULLY ENCLOSED, WET DISC
- HYDRAULIC ACCUMULATOR STORED ENERGY BRAKING FOR DEAD ENGINE STOPS
- "FAIL-SAFE" PARK BRAKE: SPRING APPLIED HYDRAULIC RELEASE
- DASH-MOUNTED INDICATOR LIGHTS

ELECTRICAL SYSTEM:

- 12 VOLT, NEGATIVE GROUND
- 925 AMP COLD CRANKING, MAINTENANCE FREE BATTERY
- 65 AMP H.D. ALTERNATOR
- CIRCUIT BREAKER PROTECTED SYSTEM

FILTRATION:

- AIR CLEANER — 2 STAGE DRY TYPE WITH REPLACEABLE ELEMENTS. (VISUAL SERVICE IND. STD.)
- ENGINE OIL LUBE — FULL FLOW SPIN-ON CARTRIDGE TYPE WITH BYPASS
- FUEL FILTER WITH WATER SEPARATOR & DRAIN.
- TRANSMISSION — SPIN-ON TYPE WITH SAFETY BYPASS
- MAIN HYDRAULICS — 10 MICRON FULL FLOW FILTER ELEMENT WITH SAFETY BYPASS

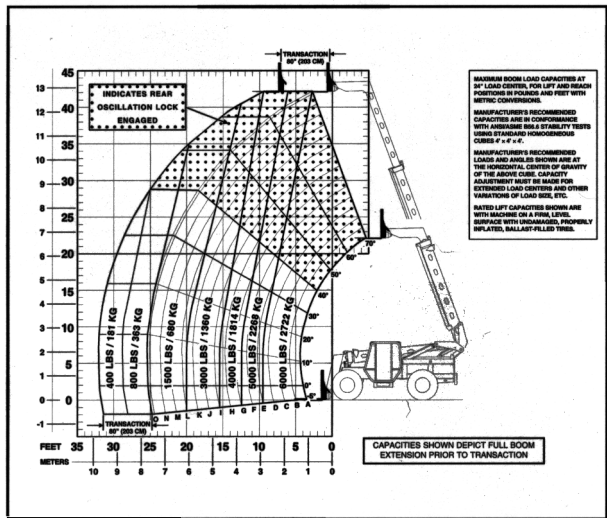
HYDRAULIC SYSTEM:

- 2-SECTION GEAR PUMP: 18 GPM TO MAIN HYDRAULICS, 18 GPM TO STEERING, BRAKE PRIORITIES AND HYDRAULIC SYSTEM. EXTRA FINE METERING & SELF CENTERING HYDRAULIC CONTROL VALVES.

STANDARD EQUIPMENT:

- SEAT BELT
- HORN
- REVERSE WARNING ALARM
- NEUTRAL START SWITCH
- SKID RESISTANT FLOOR MATERIAL
- RIGHT SIDE REAR VIEW MIRROR
- ANTI-FREEZE PROTECTION TO - 30°F
- MACHINE LEVEL INDICATOR

SALES & SERVICE



STANDARD EQUIPMENT (cont'd):

- FULL INSTRUMENTATION INCLUDING: FUEL GAUGE, WATER TEMP. GAUGE, HOUR METER, OIL PRESSURE GAUGE, TRANS. OIL TEMP. GAUGE, VOLT METER, PARK BRAKE APPLIED LIGHT, LOW BRAKE PRESSURE LIGHT, TRANS. DECLUTCH LIGHT
- AUTOMATIC FORK LEVELING
- HYD/HYD. JOYSTICK CONTROLS (PILOT OPERATED)
- 3-SECTION FULLY SYNCHRONIZED SLIDE BOOM
- FIRST AUXILIARY HYDRAULICS TO BOOM TIP
- FRAME LEVELING 12-1/2" L & R
- TIE DOWN LUGS
- 13:00 X 24 - 10 PLY TIRES
- QUICK ATTACH
- REAR AXLE STABILIZER SYSTEM
- OPERATOR'S COMPARTMENT ROPS/FOPS
- CONFORMS WITH ANSI/ASME B56.6.1992

OPTIONAL EQUIPMENT:

- 50.5" FORK CARRIAGE
- 50.5" SIDE TILTING CARRIAGE (10° R-L)
- DUAL FORK POSITIONING CARRIAGES AVAILABLE IN WIDTHS 50.5" OR 74"
- 74" STANDARD FRAMERS CARRIAGE
- 74" SIDE TILTING FRAMERS CARRIAGE (10° R-L)
- 2" X 4" - 42"/48"/60" FORKS
- 1-3/4" X 6" - 48"/60" LUMBER FORKS
- 2" X 2" CUBING FORKS - ORDER IN PAIRS
- AUXILIARY HYDRAULICS FOR SECOND ACCESSORY
- 1.25 CU YD BUCKET (LIGHT MATERIAL)
- 4,500 LB CAPACITY HYDRAULIC WINCH, BOOM MOUNTED
- CAB ENCLOSURE
- HEATER/DEFROSTER
- AIR CONDITIONING
- 10' TRUSS BOOM (W/WO 2,000 LB CAP. HYDRAULIC OPERATED WINCH)
- ROADWAY LIGHT PACKAGE
- WORK LIGHT PACKAGES
- 3/4 CU YD HYDRAULIC OPERATED CONCRETE HOPPER
- STABILIZERS

OPERATING SPECIFICATIONS:

LIFT AND CARRY CAPACITY	6,000 LBS
MAX. LIFT HEIGHT	42'
MAX. "LANDING HEIGHT"	42'
TRANSACTION	80"
MAX. HORIZONTAL FORWARD REACH	32'
MAX. REACH @ MAX. LIFT	9'8"
CAPACITY @ MAX. REACH	400 LBS
BELOW GRADE	23"
OUTSIDE TURNING RADIUS	13' 8"
GROUND CLEARANCE	16"
OVERALL HEIGHT	95"
OVERALL WIDTH	8'
OVERALL LENGTH	23'7" (W/42" Forks)
WHEELBASE	124"
WEIGHT	22,700 LBS

CAPACITIES:

FUEL	40 GAL.
COOLING SYSTEM	18 QTS.
CRANK CASE W/ FILTER	14 QTS.
HYDRAULIC RESERVOIR	44 GAL.
BATTERY	12 VOLT 925 CCA

LULL® INDUSTRIES, INC.

3045 Hwy. 13, St. Paul, MN 55121. Tel 612-454-4300

©Copyright 1994 LULL INDUSTRIES, INC. All Rights Reserved

Lull reserves the right to make improvements in design and changes in specifications without notice and without incurring obligation as to units already sold.